



Drawstring backpack

With jazzed up phone pocket

Yardage:

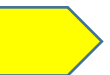
½ yard Main fabric

¼ yard, Pocket fabric

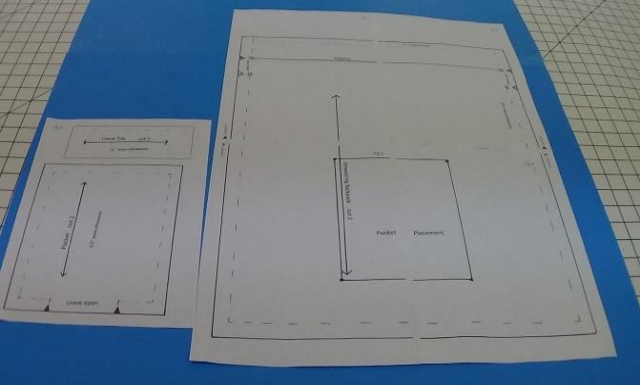
3 yards grosgrain ribbon

Tip. Its always best to read thru the instructions and get familiar with how your project will be assembled.

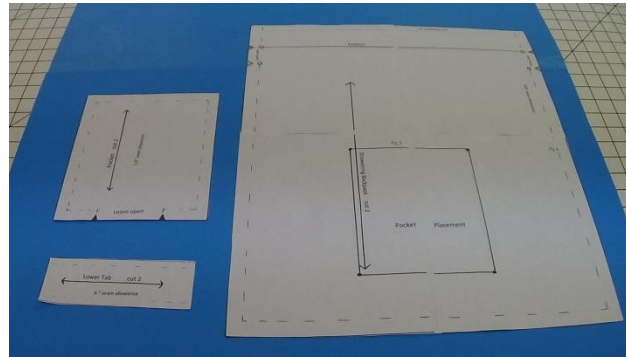
Check off the yellow box with each step you get thru, this will help you not miss a step.



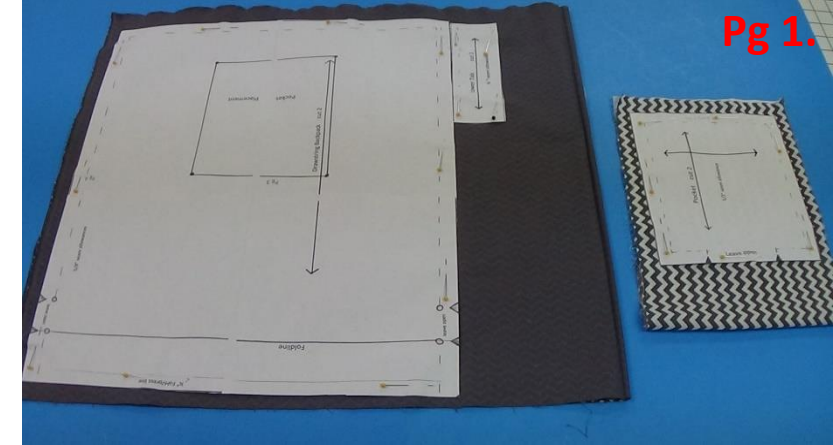
Cutting, marking and prepping



A – tape the pattern piece's together at connection dots.



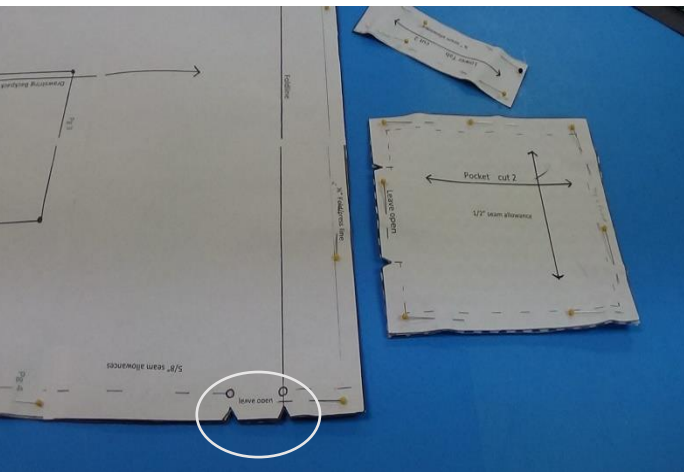
B. Cut out the 3 pattern pieces on the cutting lines.



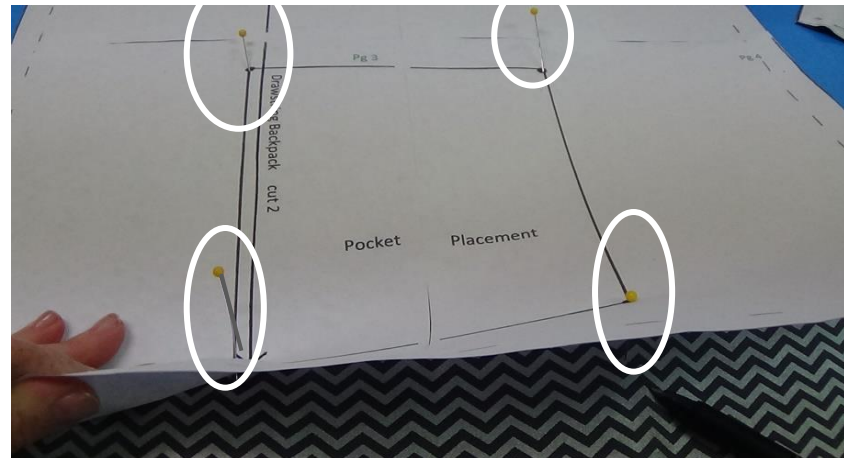
Pg 1.

C. Fold your fabric in half so you will be cutting 2 at a time. Lay out pattern evenly and pin close to the edges. Lay out your pocket fabric too, fold in half and pin your pocket pattern close to the edges.

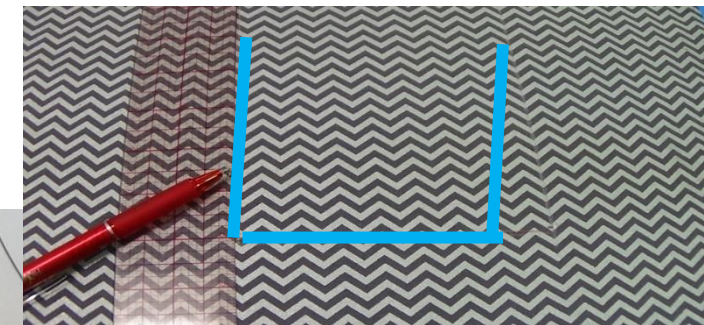
Cut out your fabric.



D. You will have 3 pattern pieces for a total of 6 fabric pieces. Clip the notch marks, just a little clip will help you know where to start and stop your stitches as the instructions will indicate later. Unpin the pattern .

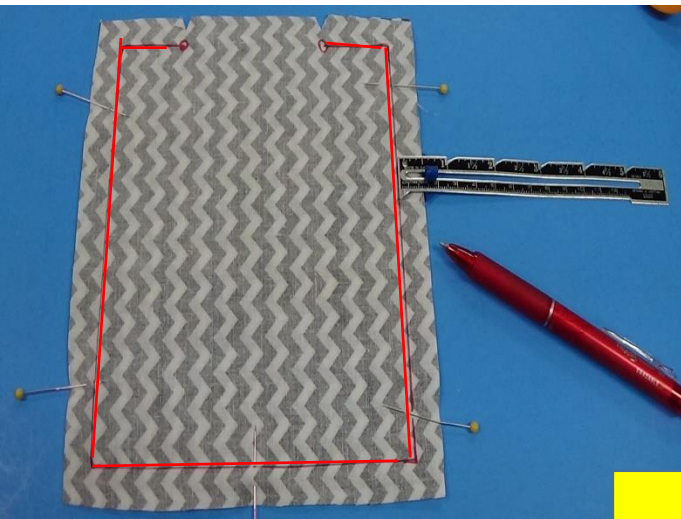


F. To mark the pocket placement, on one side of your fabric, put pins in at the circle as illustrated and lift pattern up and make a mark onto the fabric. Then take your pins out.



G. Use a ruler to connect the dots with a chalk mark to show you where to place your pocket once it is made.

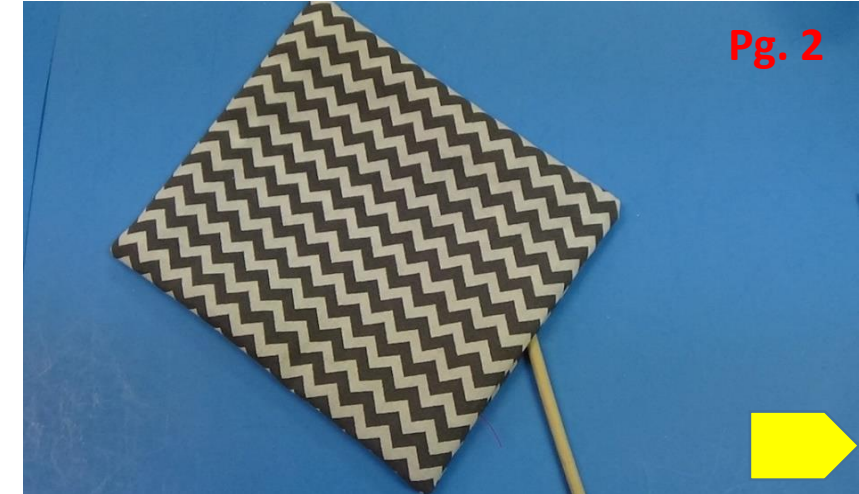




1. Make your pocket first. Match up your pocket right (pretty sides) together. Pin and then mark the $\frac{1}{2}$ " seam allowance as shown.

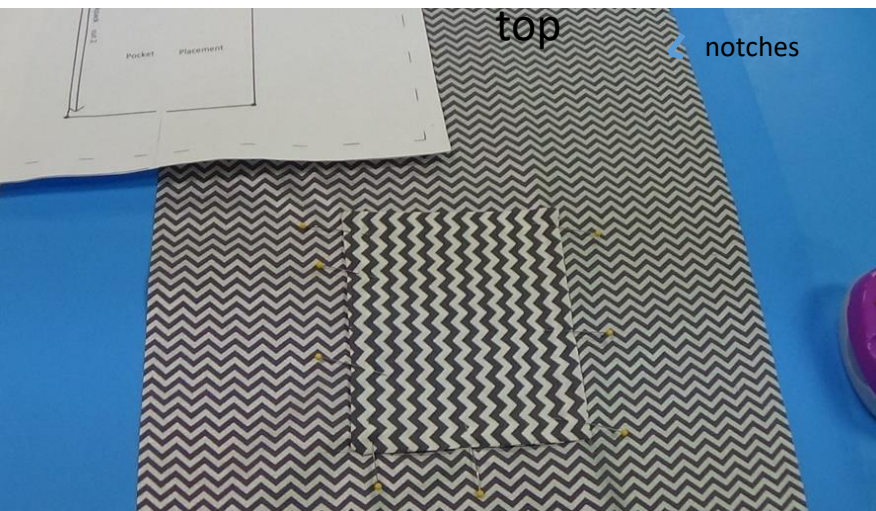


2. Stitch around the marked edges. Keep open between circles. Reverse stitch at beginning and end of the opening. Clip the edges as shown to reduce the bulk when you flip it right side out.

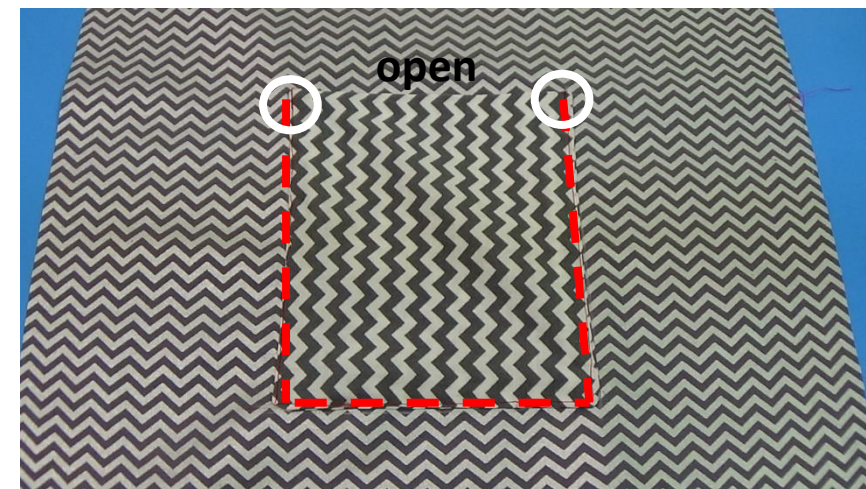


Pg. 2

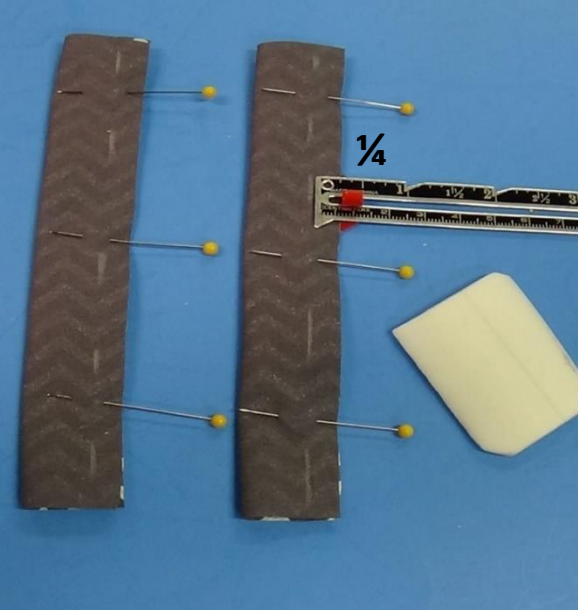
3. Flip the pocket pretty side out and push your point turner into the opening to get the corner points pushed out well. Press flat and be sure opening is tucked in. You should have a flat square.



4. Working on 1 piece/layer of fabric. Place the pocket on your marks with the open part of the pocket at the bottom. Pin thru all thicknesses, around the sides and bottom of the pocket to help it stay in place when sewing.



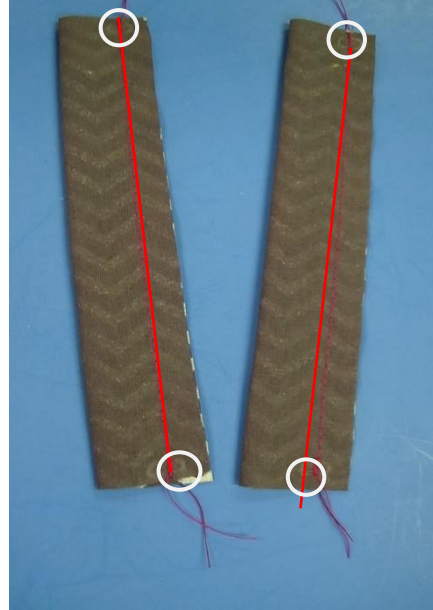
5. Stitch pocket close to the edges, around the sides and bottom. Leaving the top part open. Be sure to reverse stitch at tops of pocket



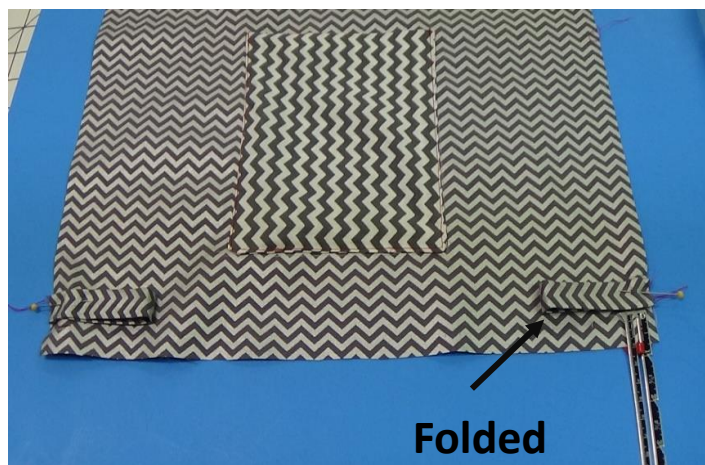
6. Fold the 2 lower tabs as indicated, (pretty sides together) pin and mark a $\frac{1}{4}$ inch seam allowance down the sides.



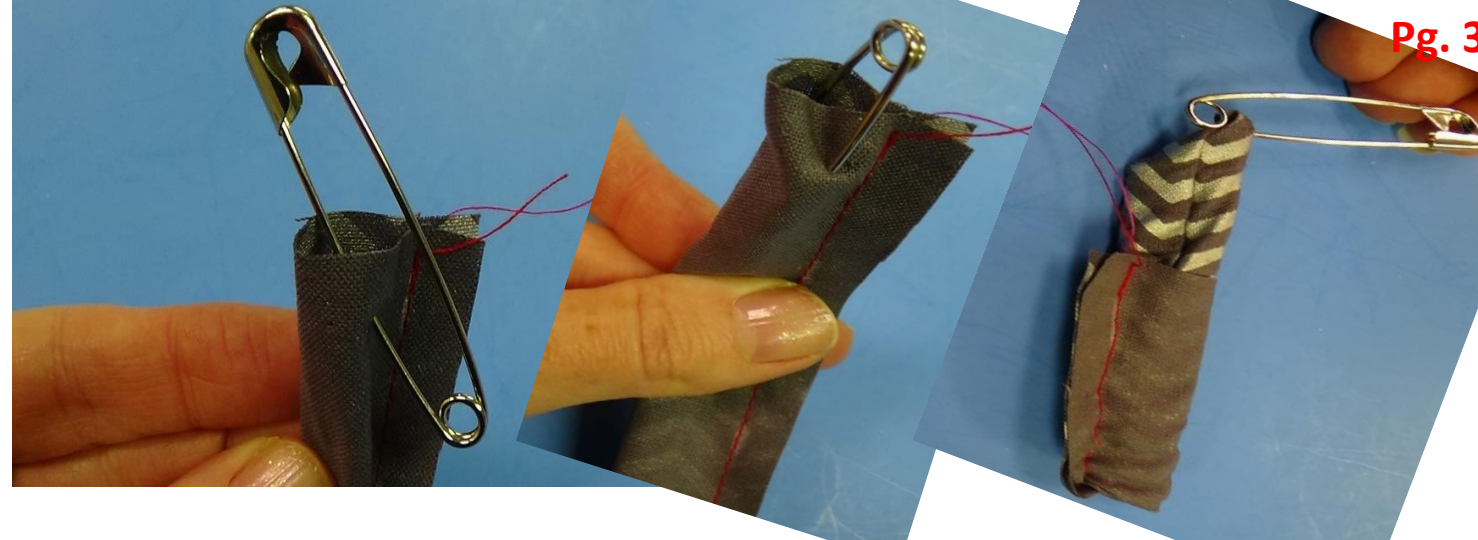
9. Press the tabs flat



7. Stitch on your marks, be sure to reverse stitch at beginning and end of your stitches.



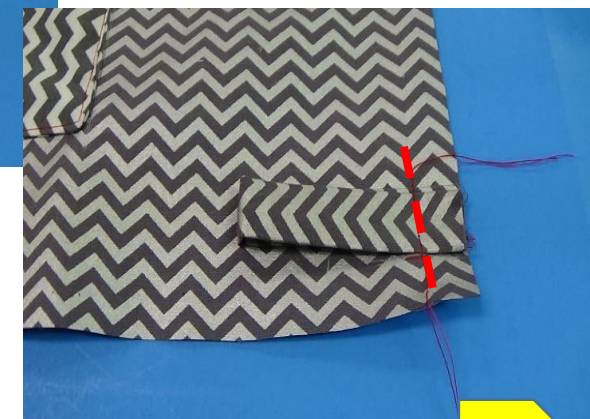
10. Fold the tabs in half and place as indicated.



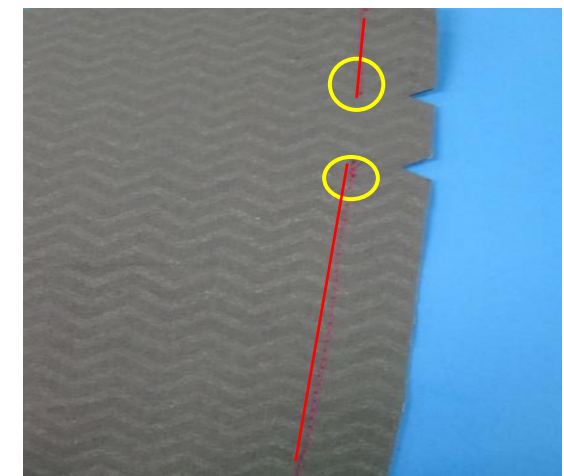
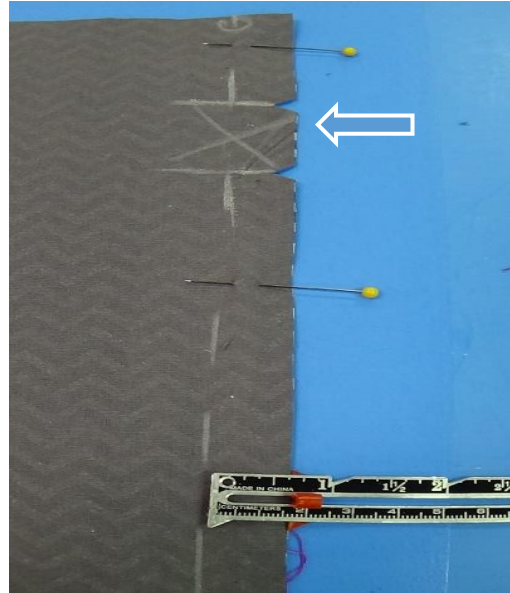
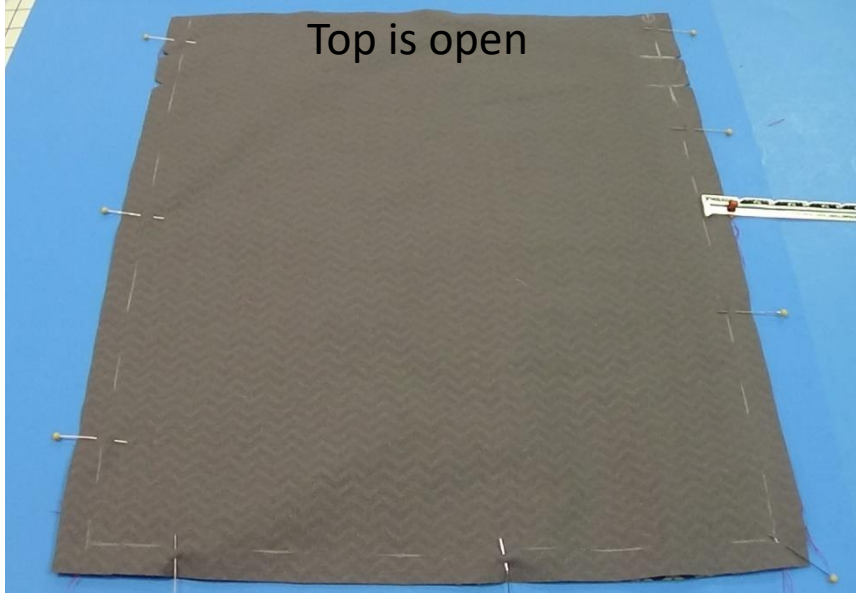
8. To turn the tabs right sides out, place a safety pin thru only one layer at top of tube as indicated. Turn the pin inside the tube and then push it thru the tube till it comes out the other end and fabric rolls with the pretty sides out. You will have to push and pull the fabric over in bits. Takes a bit of figuring out!



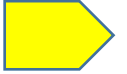
11. Tabs should be placed about **1 inch** above the bottom edges. Pin. Stitch the folded tab to the backpack.



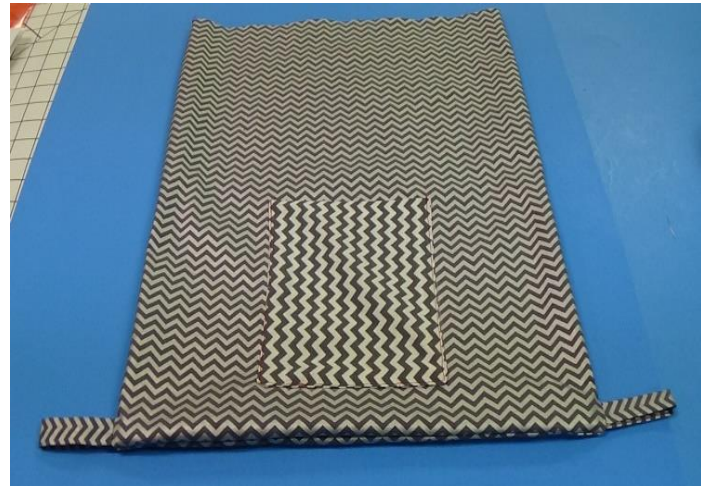
Top is open



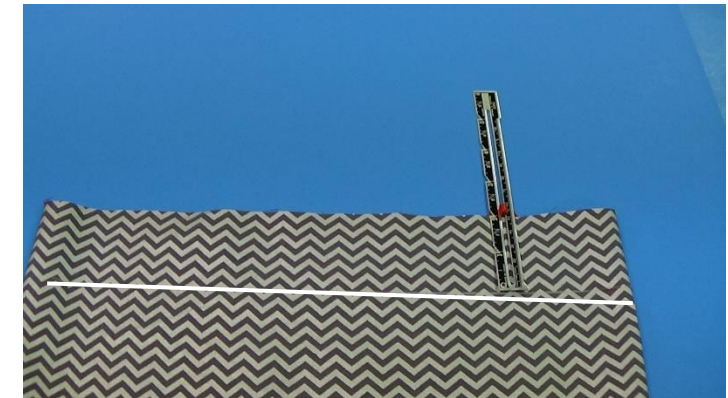
12. Lay the second piece of fabric over the one you have been working on (pretty sides together), matching the notches up at the top. Pin and mark the seam allowance $5/8$ ". Mark the area between the notches with an x, you want to leave this area open for the drawstrings to go thru later.



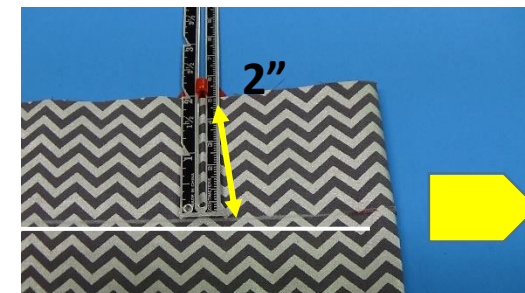
14. Press the side seams open as far down as you can go. There will be a small slit opening between the notches.

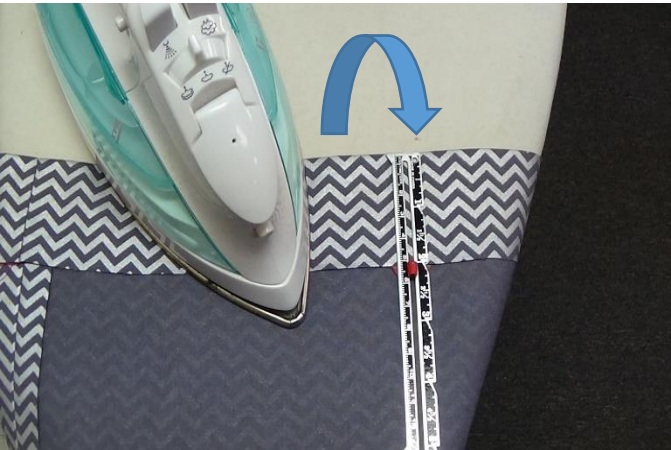


15. Turn the backpack right side out and push corners out till it is square.

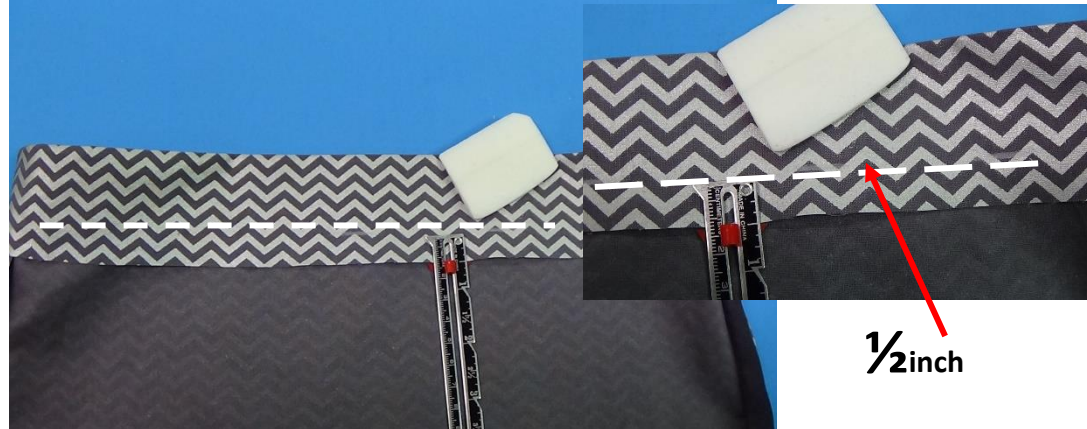


16. Now to make the drawstring casing. Mark a 2" mark around the top. On the pretty side. On both sides.





17. Press over the fabric on the 2" line, let it cool a bit before moving fabric, this creates a stronger crease.



18. Now measure up $\frac{1}{2}$ inch on the bottom raw edge, all the way around both sides.



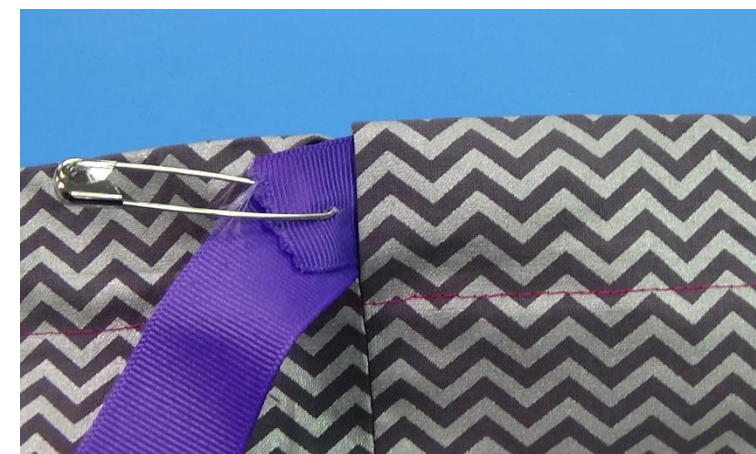
19. Now press at this mark folding under the fabric, be sure not to unpress the first crease you just did.



20. Stitch close to the edge of the fold you just pressed under. This creates the casing for the ribbon to fit into. Stitch all the way around.



21. The opening for the ribbon will be on the outside in the casing area on both side seams. Use a large safety pin on one end of the ribbon to help bring the ribbon thru the casing. Thread the ribbon thru the casings.





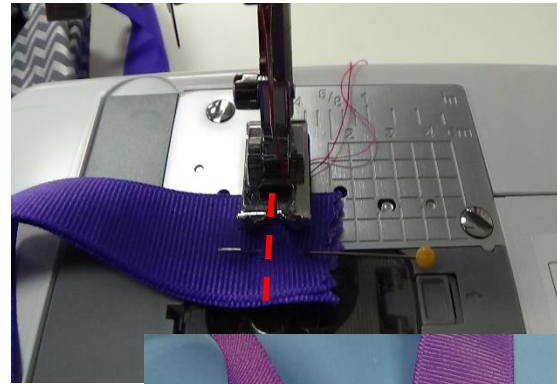
22. Draw the ribbons thru both sides.
Each end of the ribbon should come out the same side as it ends.



23. You should be able to pull both ribbons to drawstring the bag closed.



24. Now to connect the straps.
Put 1 side of the ribbon thru the lower tab between the fold.
And connect the other ribbon that is going over.
Pin it together and test it out before stitching it.



25. Stitch the ribbon together about 5/8"
press open and stitch in a square shape to reinforce the strap.



26. All done! Now you can decorate the pocket! Stitch the shoe button on the front layer of the pocket and you can glue gun the trim on or hand stitch it on around the pocket.