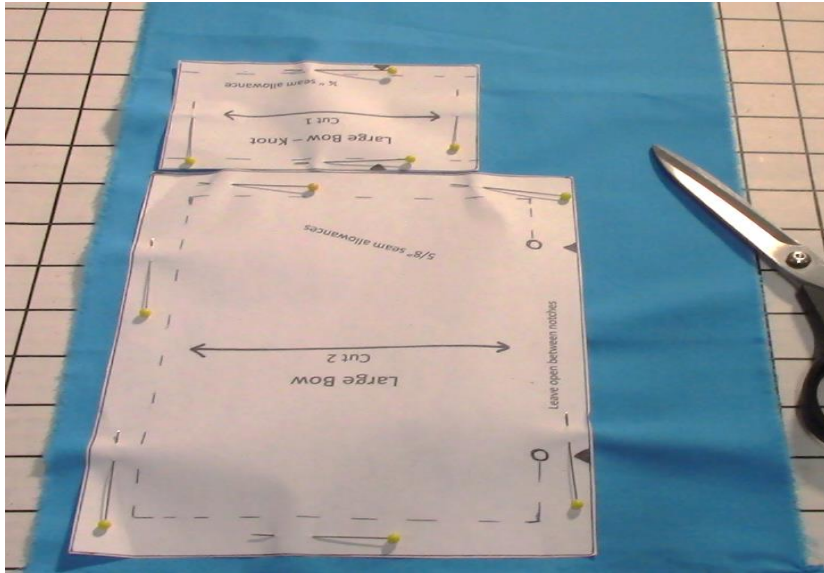


# Fashion BOWS

## sewing instructions

1

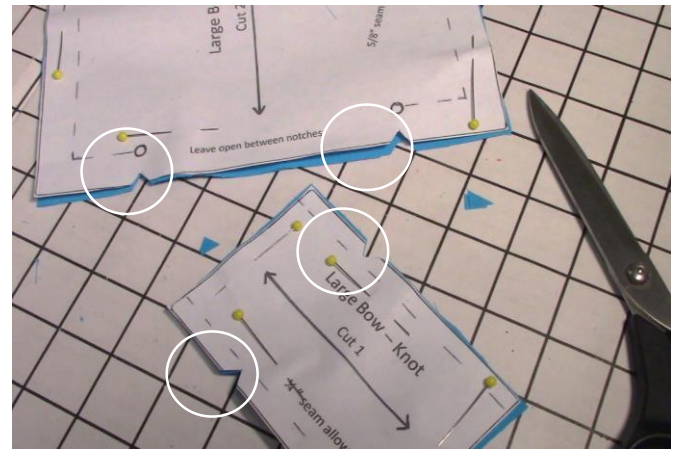
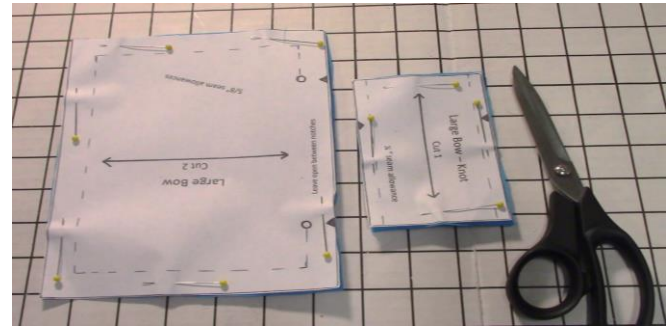


### 1. Cutting out the fabric pieces.

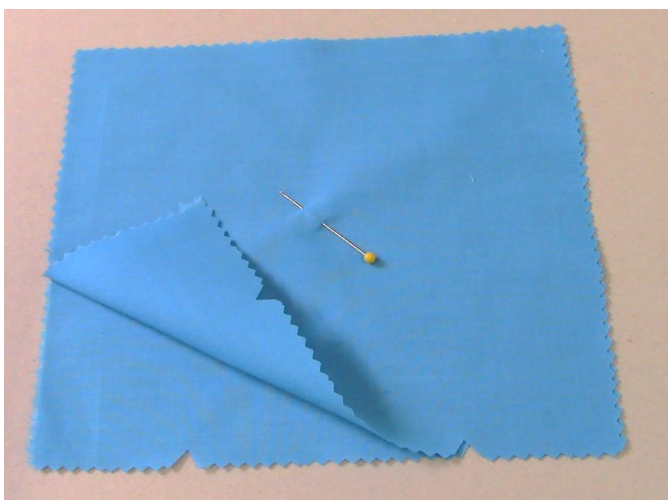
The fabric is folded so you will be cutting out 2 fabric pieces with each pattern.

Lay out the pattern pieces as illustrated.

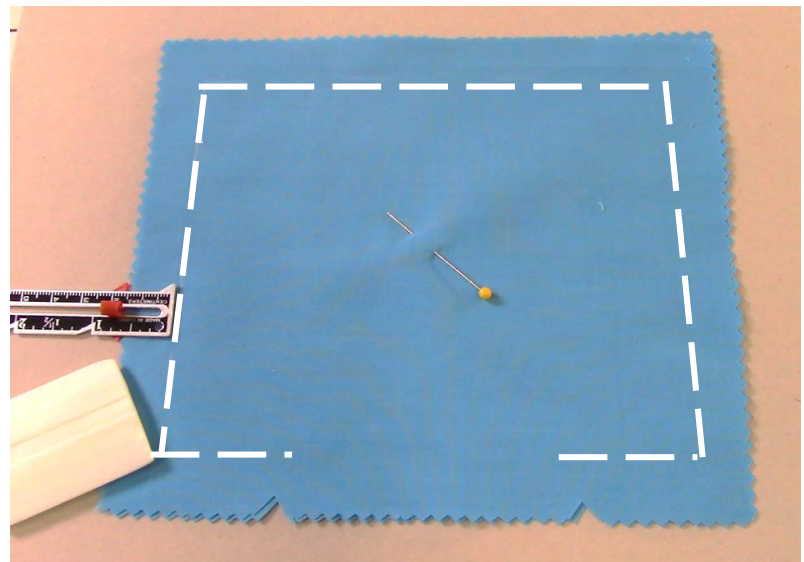
Pin – (pins should be somewhat close to the edge of the patterns to help keep them down when cutting around the edges). Cut along pattern.



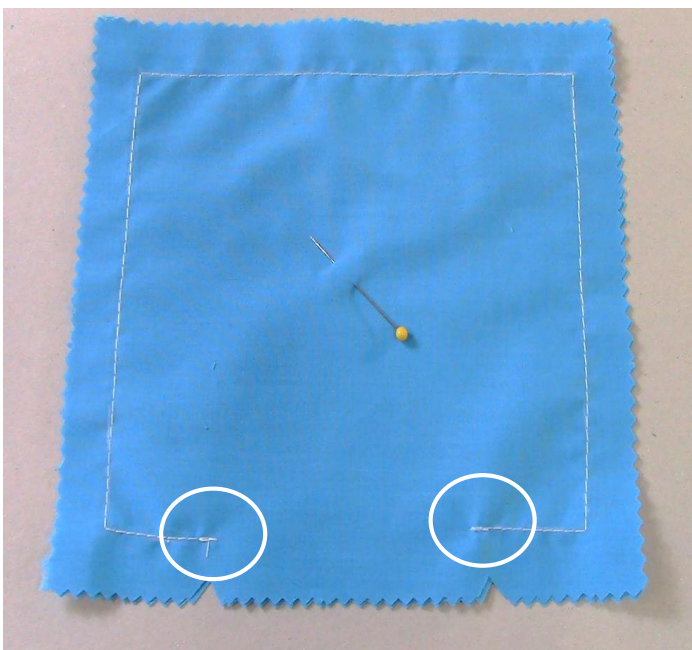
### 2. Clip out the notches and unpin the pattern from the fabric and set aside the pattern.



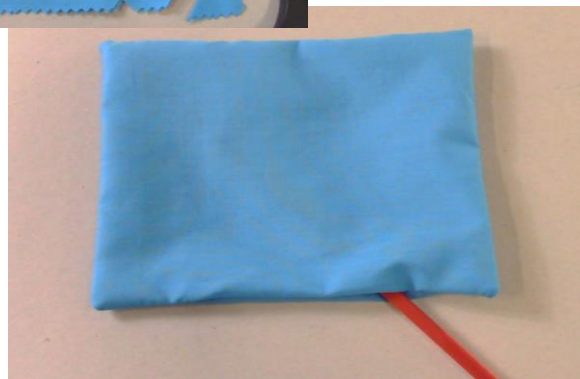
### 3. Start by placing the fabric pieces right sides facing each other. Matching the notches. Pin together in the middle.



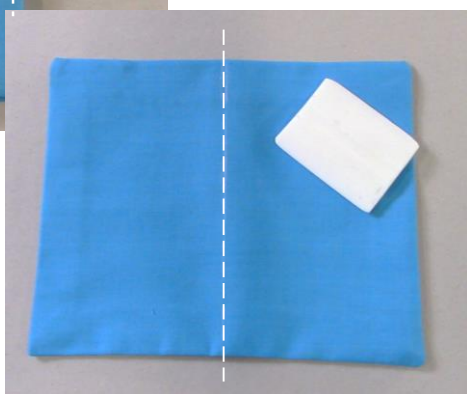
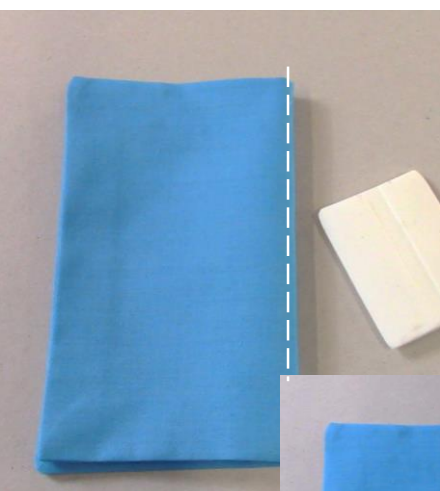
### 4. Mark the seam allowance. 5/8" all around. Being sure the pivot points are clear in the corners.



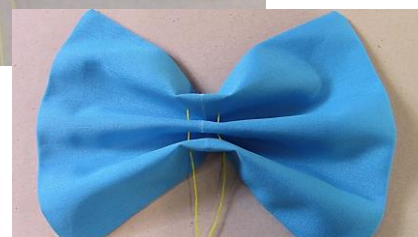
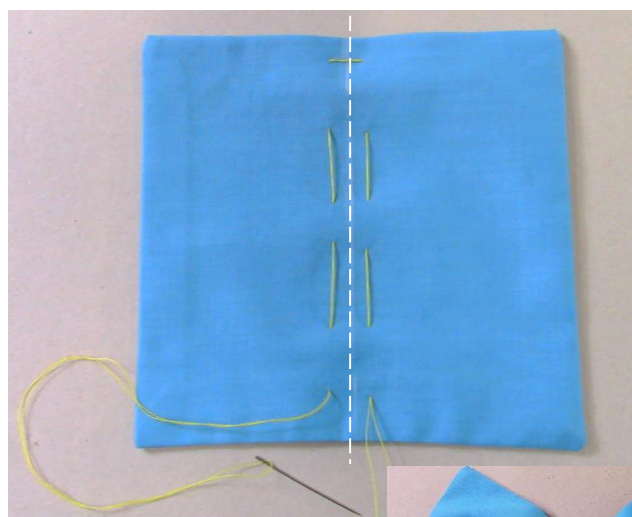
**5.** Sew on the marks starting at the left notch ending at the other notch. (this will leave an opening for turning it right side out.) be sure to reverse stitch at the start and end.



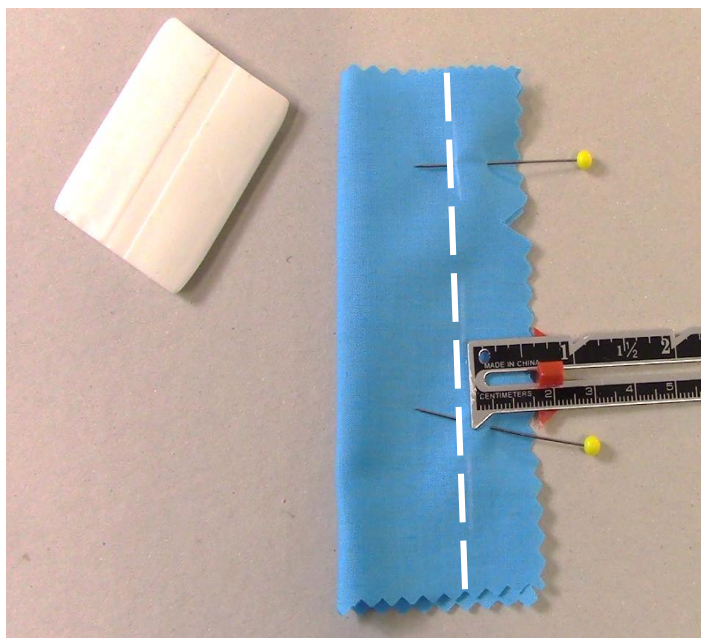
**6.** Clip the corner fabric to thin bulk. Turn the fabric right sides out. (like turning a sock inside out). Use a point turner to get the corners pushed out. You should have a square shape. Press flat.



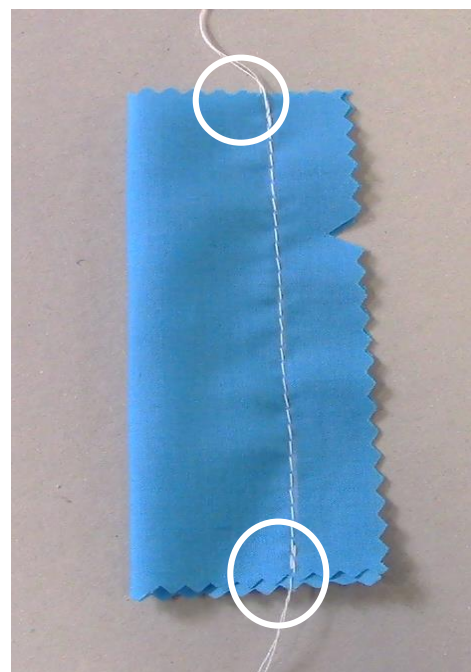
**7.** Now we have to create the gathers. Start by folding the square in half (the wider way) and lightly mark the center.



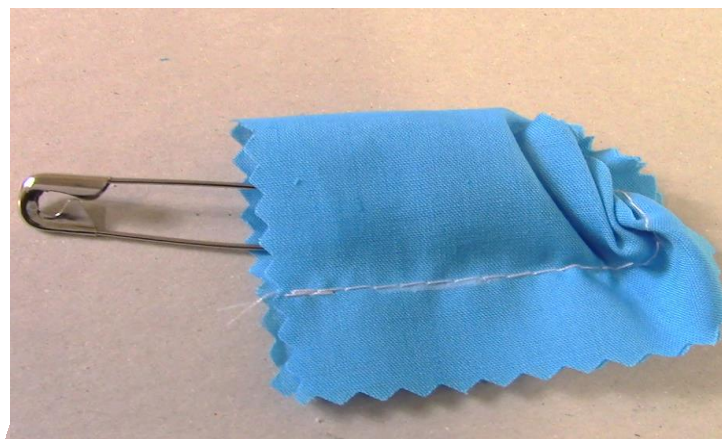
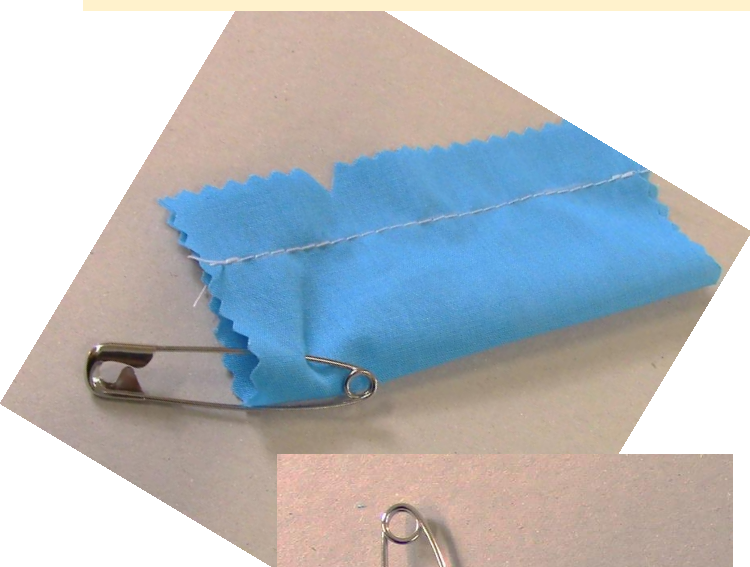
**8.** Using a double threaded needle about 12" in length, run a loose hand stitch along side the center mark crossing over and then down the other side. Then take both threads and pull, scrunching up the fabric. Tie the ends together. This holds the gathers in place.



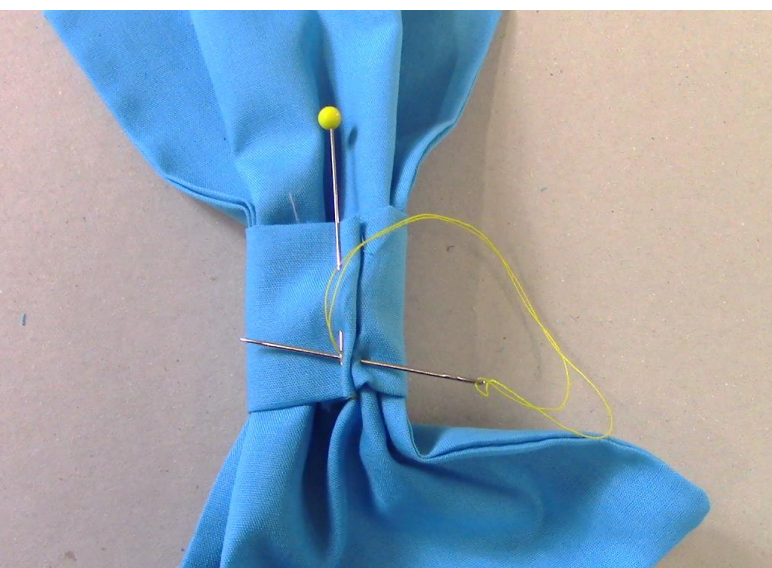
**9.** Making the bow knot: Fold the fabric piece, right sides together, lengthwise matching the notches. Mark a 5/8" seam from the raw edge.



**10.** Sew the seam, be sure to reverse stitch at the beginning and end.



**11.** Turn the knot right sides out by using a large safety pin. Pierce fabric from outside about 1/2 down from edge. Roll pin head into tube and work it out to the other end.



**12.** Roll the tube around the bow center where gathered and secure on the back side with a pin. Hand stitch to hold in place. And that's it!

