

# The Bette Skirt



## Description of skirt:

A-line skirt with slight flare that connects to an 8-inch-long skirt yoke.  
This simple skirt is easy to make and is flattering in a multitude of fabrics.  
It is also great for creative contrasting and customizing.

Building Unique Boutiques on [www.Patreon.com/ThreadBosses](http://www.Patreon.com/ThreadBosses)



Small/Medium

## YARDAGE:

	<u>Yoke</u>	<u>Skirt</u>
45" -	2/3 yd	1 yd
60" -	1/3 yd	1 yd
with or without nap		

### Suggested Fabrics:

Woven fabrics with medium drape; cotton types, linen types, silk crepe de chine, charmeuse, challis, batik, chambray. Good with medium weight knits too.

Pattern has 5/8 seam allowances

## Size S

## Size M

Finished Garment Measurements (includes wearing & design ease)

Waist – 32

Waist – 34

Hip – 42

Hip – 44

## Your Measurements

Size S estimate in retail size 4-6

Size M estimate in retail size 8-10

Waist – 27-29

Waist – 30-32

Hip – 36-37

Hip – 38-39



1-A

1

# Skirt Yoke

Size Small and Medium

Cut 2 on Fold



Bette

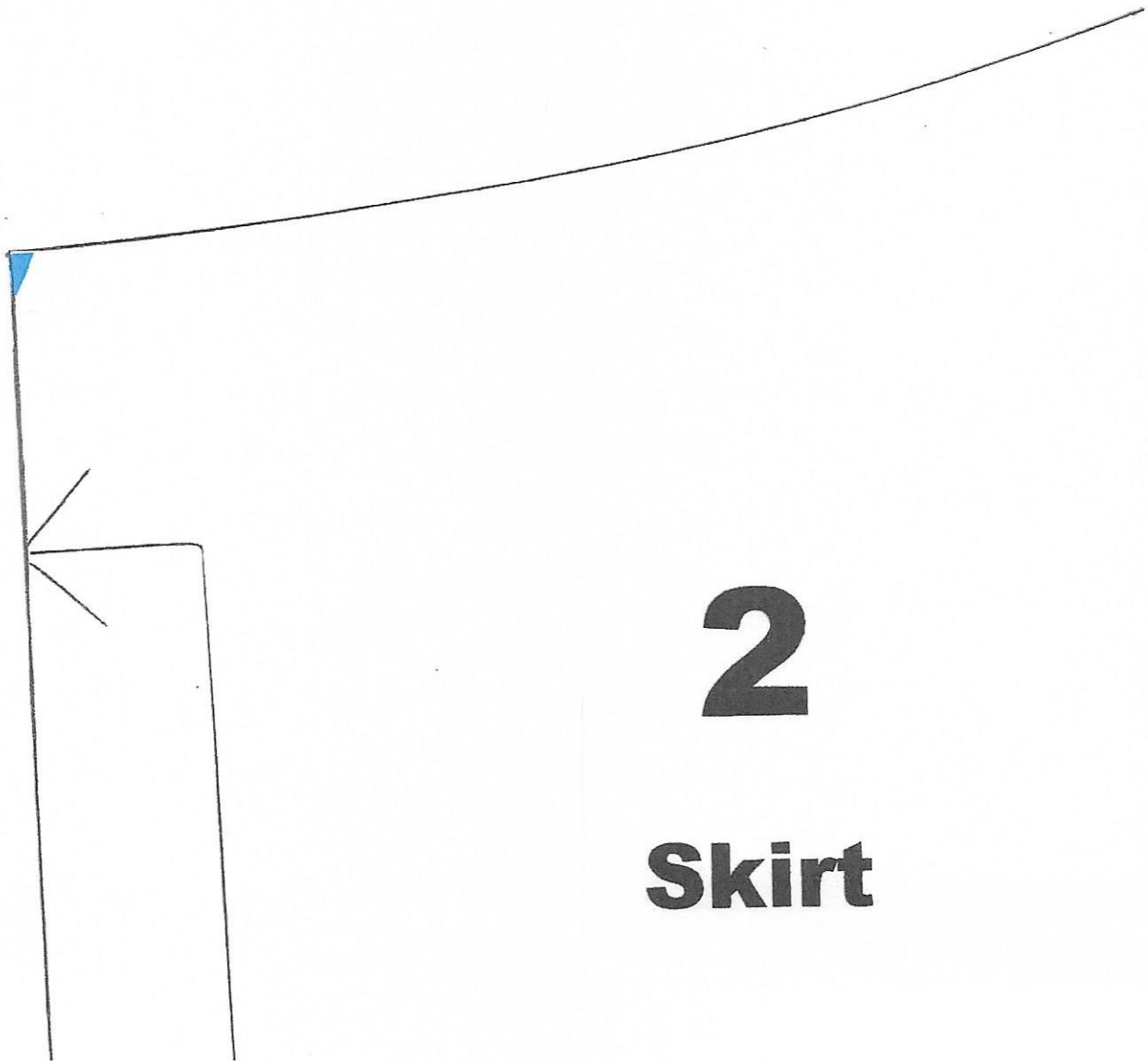
S

M

1-B

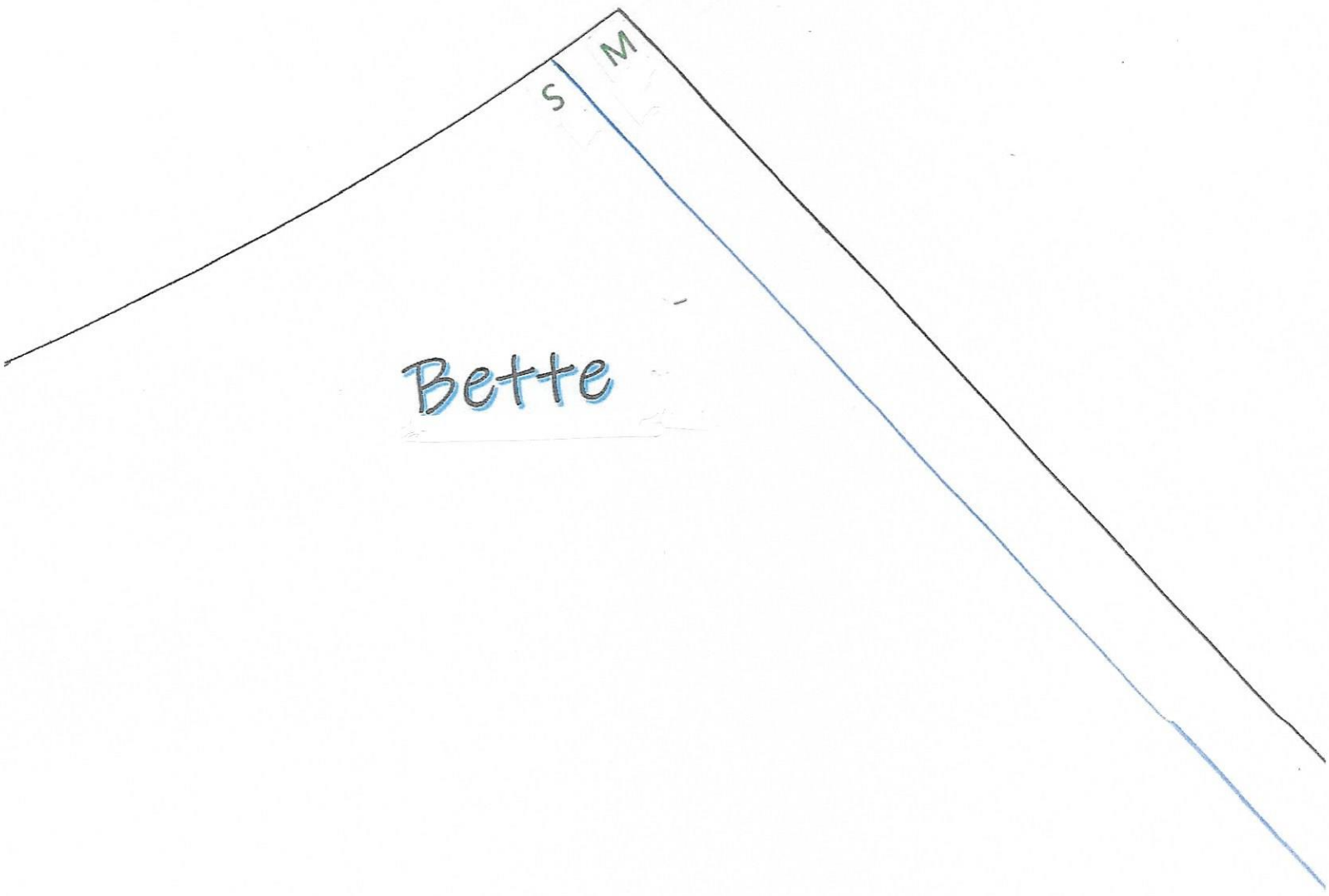
5/8 seam allowance

2-A



**2**  
**Skirt**

2-B



Bette

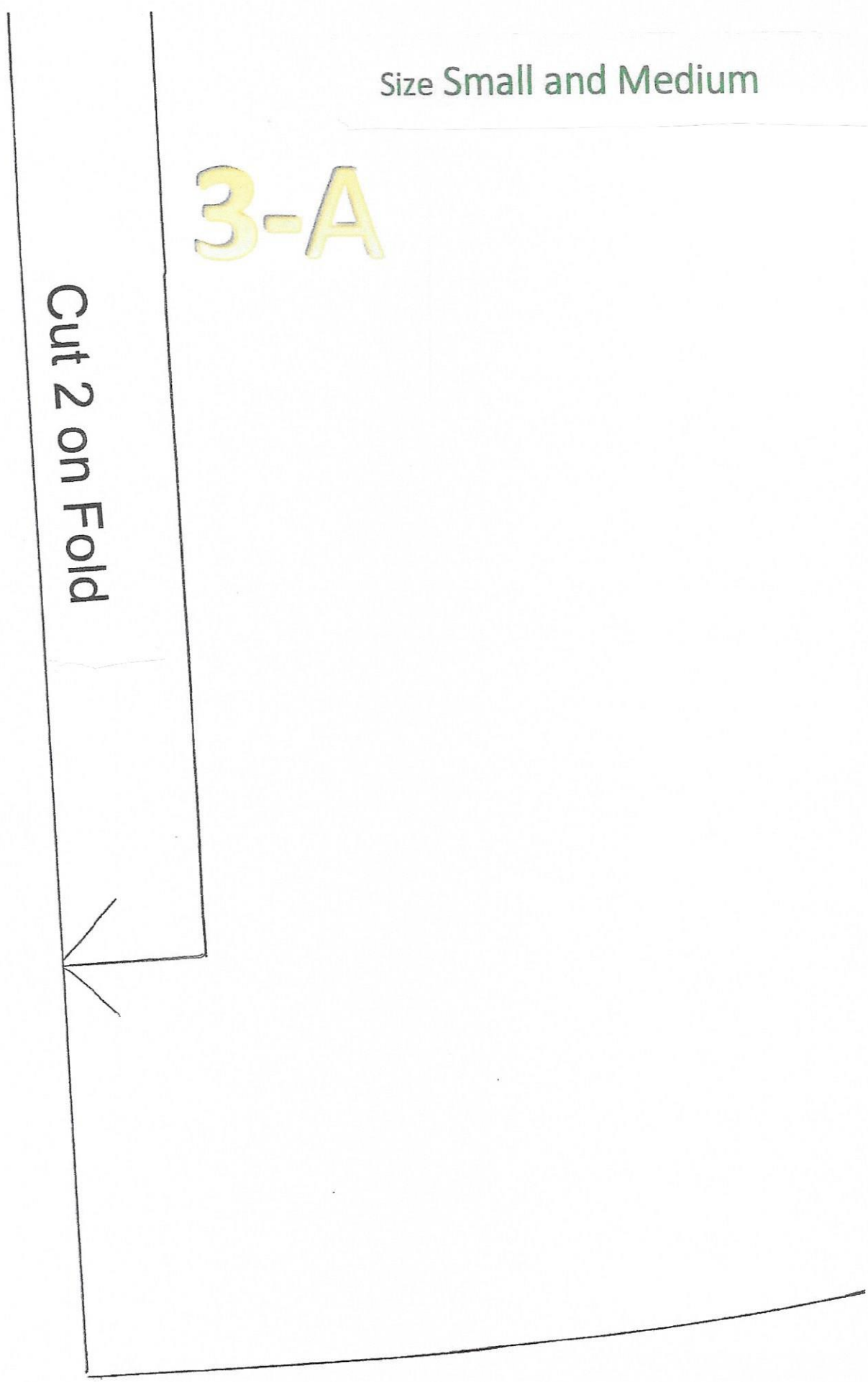
2-C

$5/8$  seam allowance

Size Small and Medium

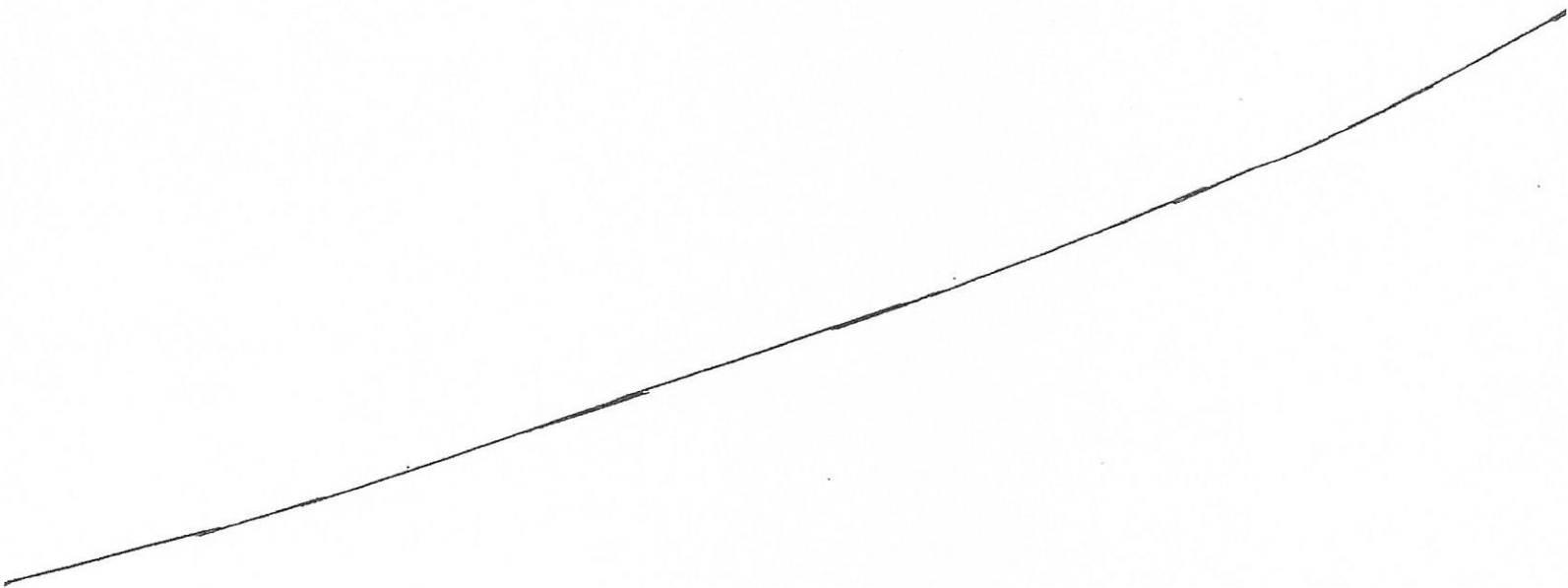
3-A

Cut 2 on Fold





3-B



3-C

