

The Bette Skirt



Description of skirt:

A-line skirt with slight flare that connects to an 8-inch-long skirt yoke.
This simple skirt is easy to make and is flattering in a multitude of fabrics.
It is also great for creative contrasting and customizing.

Building Unique Boutiques on www.Patreon.com/ThreadBosses



YARDAGE:

	<u>Yoke</u>	<u>Skirt</u>
45" -	2/3 yd	1 yd
60" -	1/3 yd	1 yd
with or without nap		

Suggested Fabrics:

Woven fabrics with medium drape; cotton types, linen types, silk crepe de chine, charmeuse, challis, batik, chambray. Good with medium weight knits too.

Pattern has 5/8 seam allowances

Size L

Finished Garment Measurements (includes wearing & design ease)

Waist – 36

Hip – 46

Size XL

Waist – 38

Hip – 48

Your Measurements

Size L estimate in retail size 12

Waist 33-35

Hip 40-42

Size XL estimate in retail size 14

Waist – 36-38

Hip – 43-45



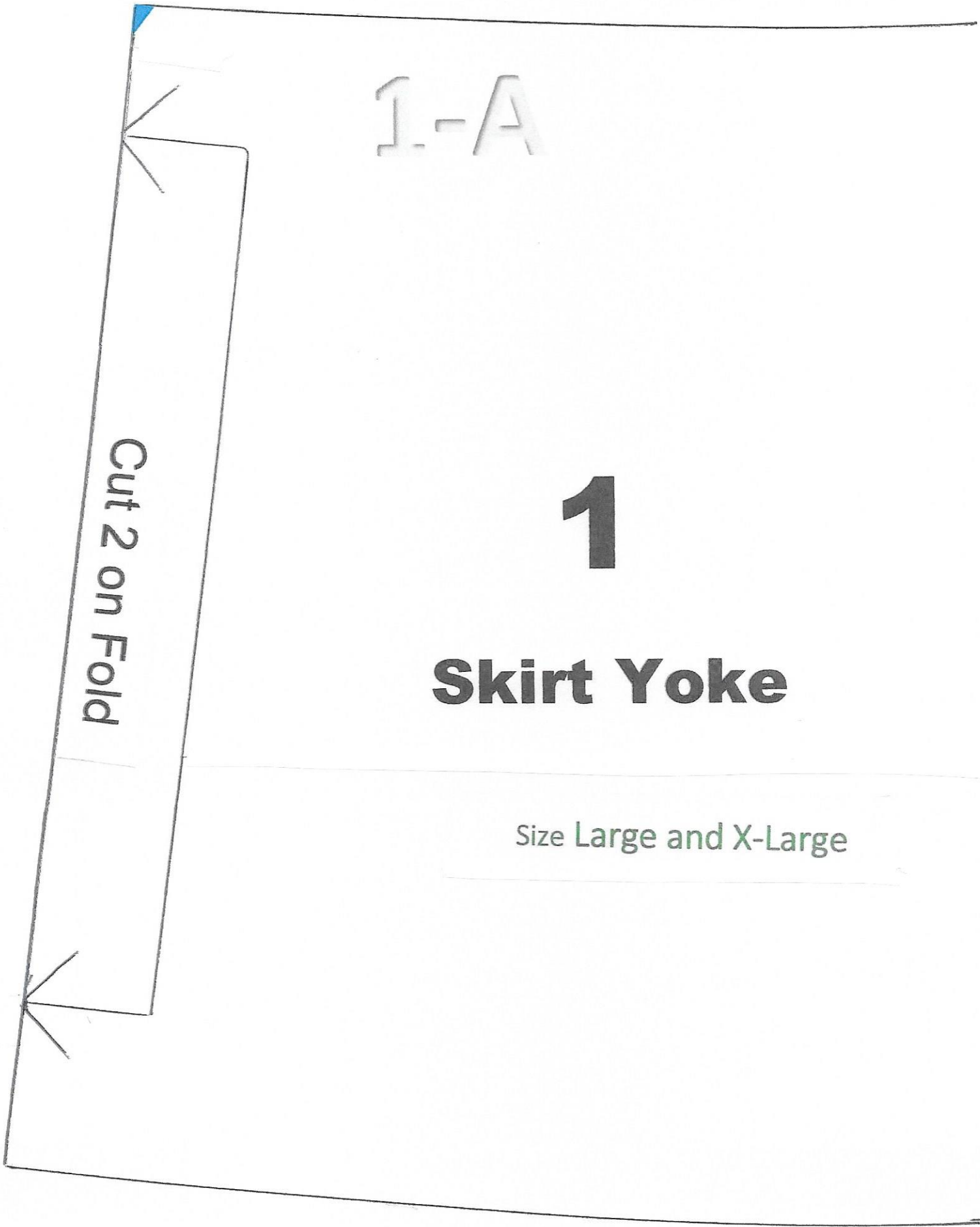
1-A

1

Skirt Yoke

Size Large and X-Large

Cut 2 on Fold



L

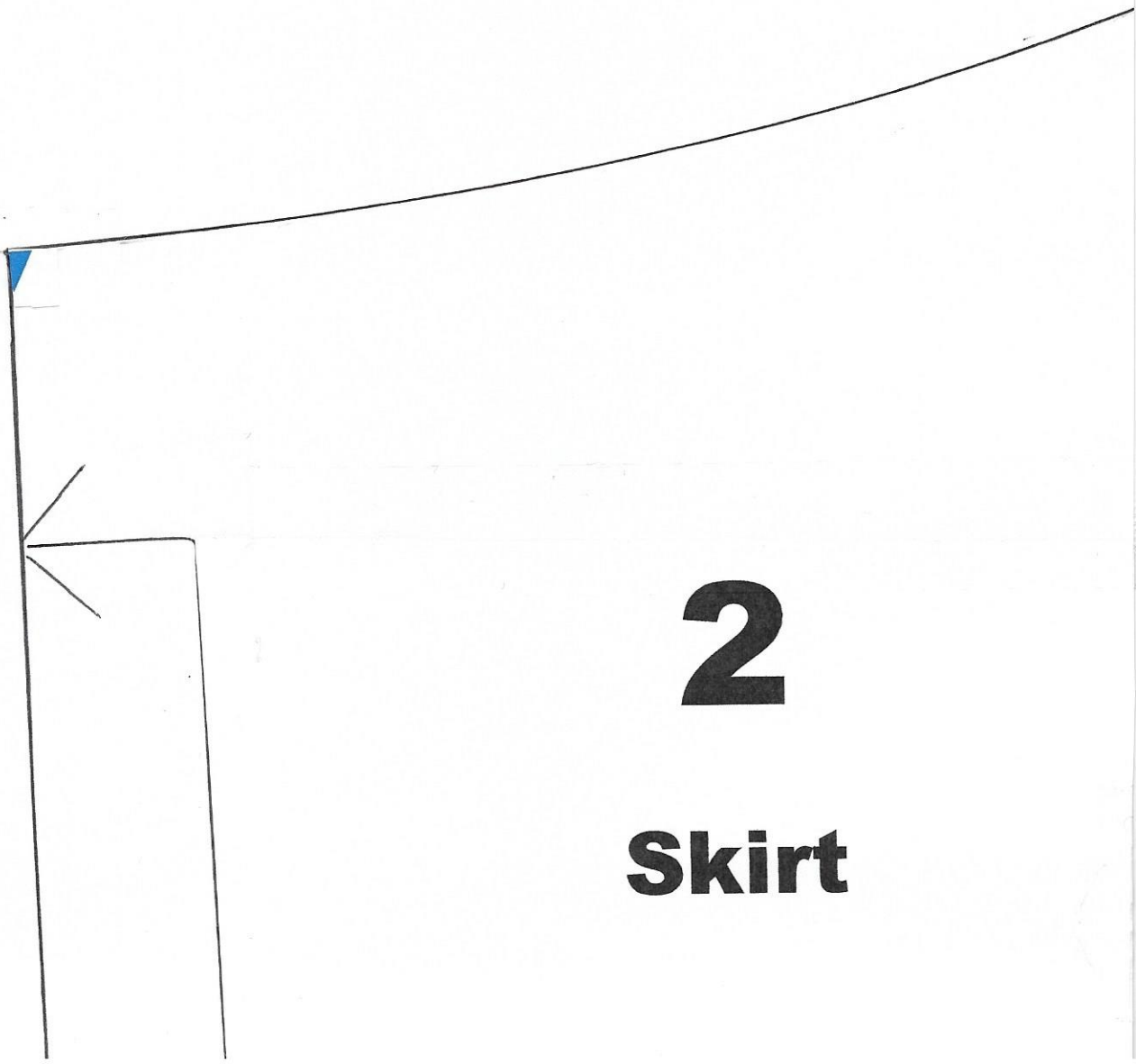
XL

Bette

1-B

5/8 seam allowances

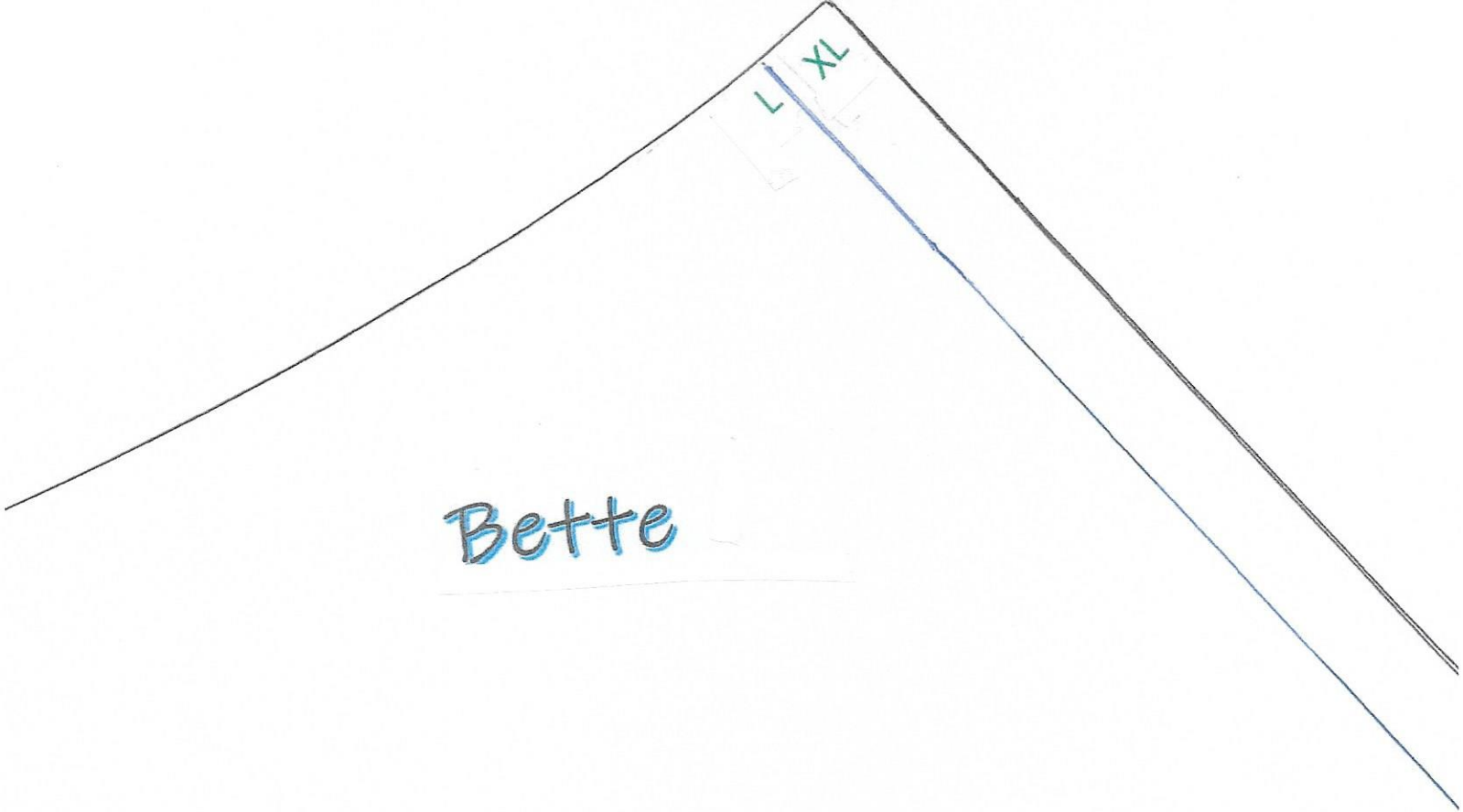
2-A



2

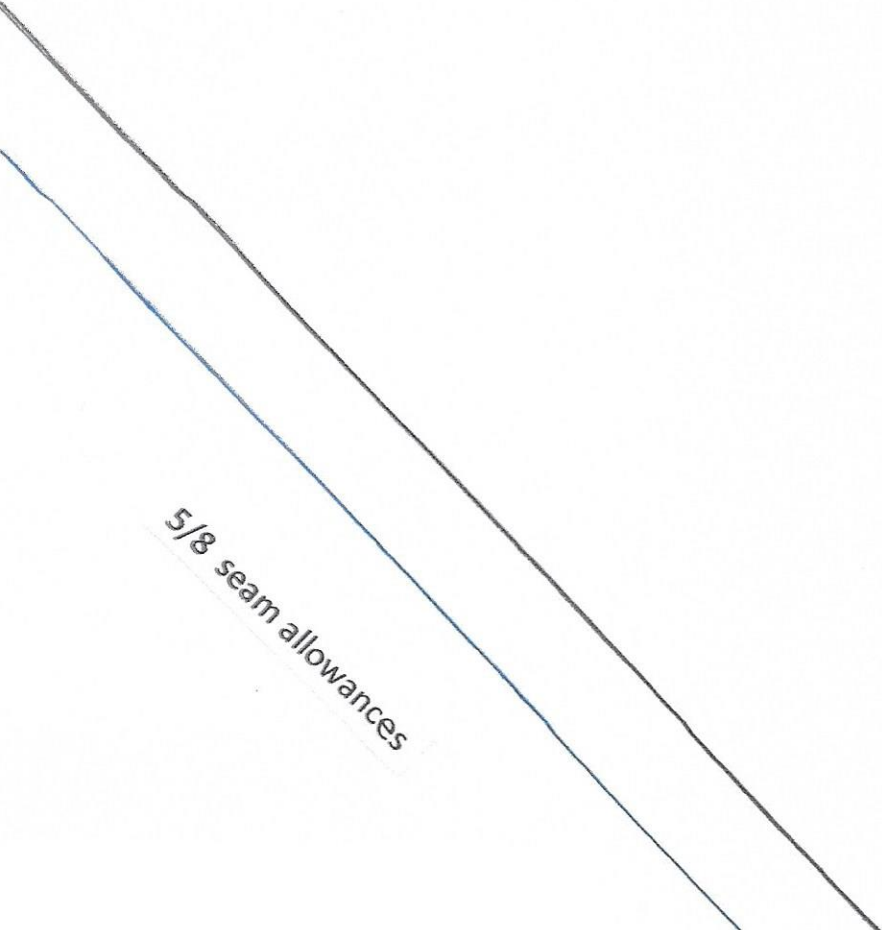
Skirt

2-B



Bette

2-C

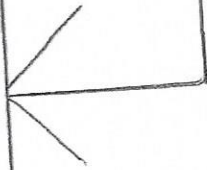


$5/8$ seam allowances

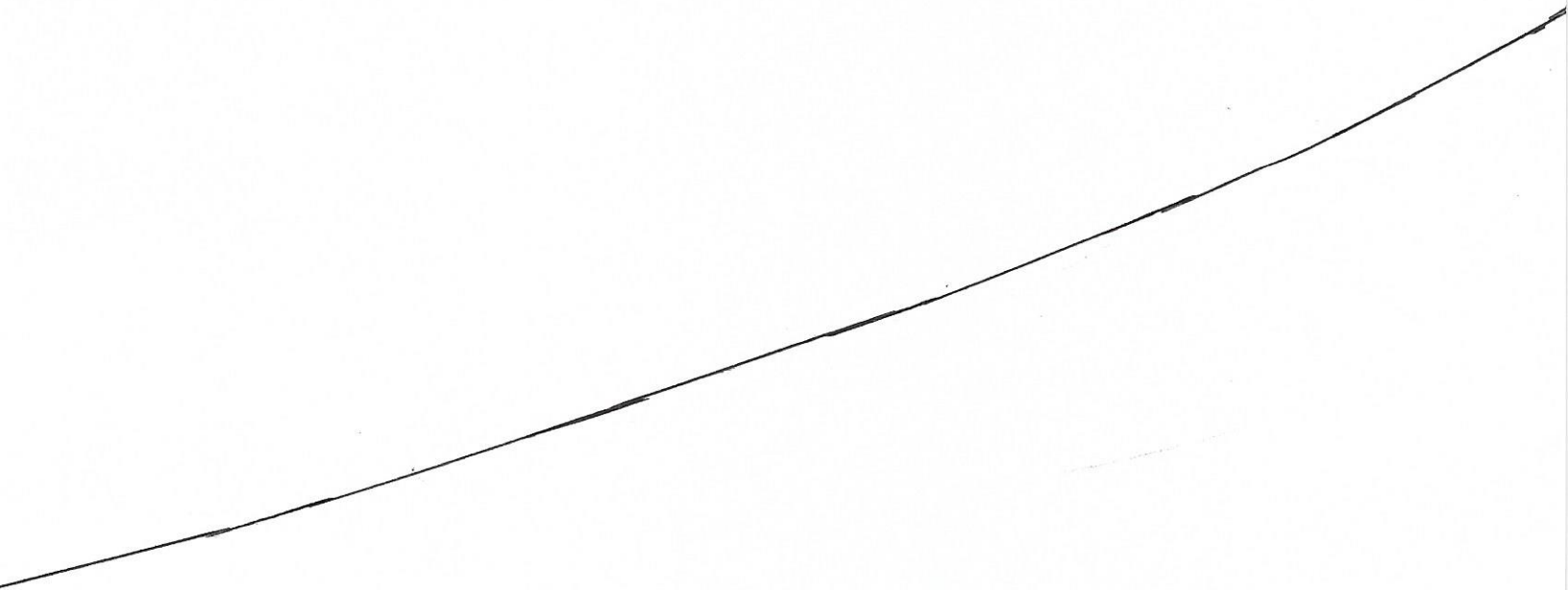
Size Large and X-Large

3-A

Cut 2 on Fold



3-B



3-C

